

ECCLESIASTICAL CULTURAL HERITAGE: RISK ASSESSMENT AND PLANNING OF PREVENTION AND REGENERATION

Director of research: Andrea Longhi; Research Board: Grazia Brunetta e Angioletta Voghera, Rosario Ceravolo, Silvia Crivello; Project Manager: Giulia De Lucia; Research Staff: Benedetta Giudice, Stefano Salata

REFERENCE FRAMEWORK

- 16 ITALIAN ECCLESIASTICAL REGIONS
- 22 DIOCESES
- 25.597 PARISHES
- > 66.000 ECCLESIASTICAL CHURCHES
- > 100.000 CHURCHES INCLUDING OTHER PROPERTIES

SEISMIC RISK FLOOD RISK LANDSLIDE RISK FIRE RISK

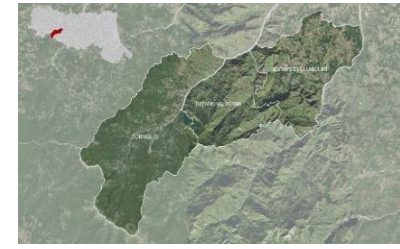
...and much more risks...

- Industrial
- War
- Volcanic
- Theft
- Abandonment
- Pollution

• Territorial and Risk Case Studies



Piedmont: 7 towns; 74 churches; 2 risks



Emilia Romagna: 3 towns; 65 churches; 2 risks



Campania: 4 towns; 37 churches; 1 risk

MAIN GOALS OF THE PROJECT

The project aimed the investigation of the relation between technical processes for the risk evaluation and the development of decision supporting strategies for planning heritage prevention and maintenance activities, by considering the social and relational processes that deal ecclesiastic heritage governance.

The main focuses of the project:

- investigation on the capitalization of data from Italian Census of Churches in the perspective of risk evaluation
- analysis on interoperability between national open-access databases regarding religious heritage and territorial vulnerabilities
- development of speditive methodology for the integrated risk evaluation to be applied in decisional strategies by heritage managing bodies
- State of the art of research projects, investigation methods and initiatives dealing religious heritage and community participation in the decisional processes about valorisation and regeneration
- evaluation of the strategies to include the theme of risk in the managing ordinary practices of ecclesiastical heritage

Future scenarios:

- Application and experimentation of the method in real territories also trough inclusion of communities
- Strengthening of census procedures
- Awareness raising on the risk problems for heritage managing bodies
- Integration of databases

BCE-RPR METHOD

MULDISCIPLINARY TEAM

- architectural historians
- urban planners
- structural engineers
- social scientists

TERRITORIAL RISK MAPS

- National territorial vulnerabilities and risks maps: ISPRA; INGV

R3C-ELABORATIONS

- Cartographic elaboration of territorial case studies

CHURCH CENSUS SCHEDULES INTERPRETATION

| | |
|------------------------|-----------------------|
| Location | Architectural details |
| Typology | Level of maintenance |
| Structural information | Photos |
| Age of construction | |

VISUALIZATION OF PRIORITIES

- Index of specific risk for each church
- **Aggregate Risk index** for the large scale planning of activities

BeWeb 2020