

Sharing the burden: *how rural congregations in England are finding ways to encourage others in their communities to help them look after their local places of worship.*

Becky Payne, Development Officer for
the Historic Religious Buildings
Alliance, and independent consultant

St Peter's Church Restoration Appeal



£120,000

£110,000

£100,000

£90,000

£80,000

£70,000

Thank you for your help in the raising of £100,000 towards the cost of Phases 1 & 2 (Raise-the-Roof).
The essential work of Phase 3 - PAINT, PLASTER & POLISH is still to come so please continue your support for the fund-raising events planned see Notices.

£40,000

Lettering sponsored by

**GRAPHICS
DIRECT**
Vinyl Graphics

Vehicle Decals : Signage : Banners
01608 730555

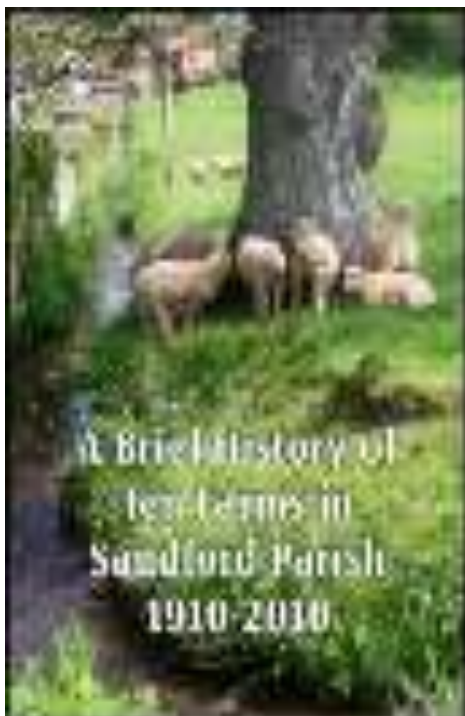
Firs

HOOK NORTON
: 01608 737641



**St Edburg, Bicester,
Oxfordshire**

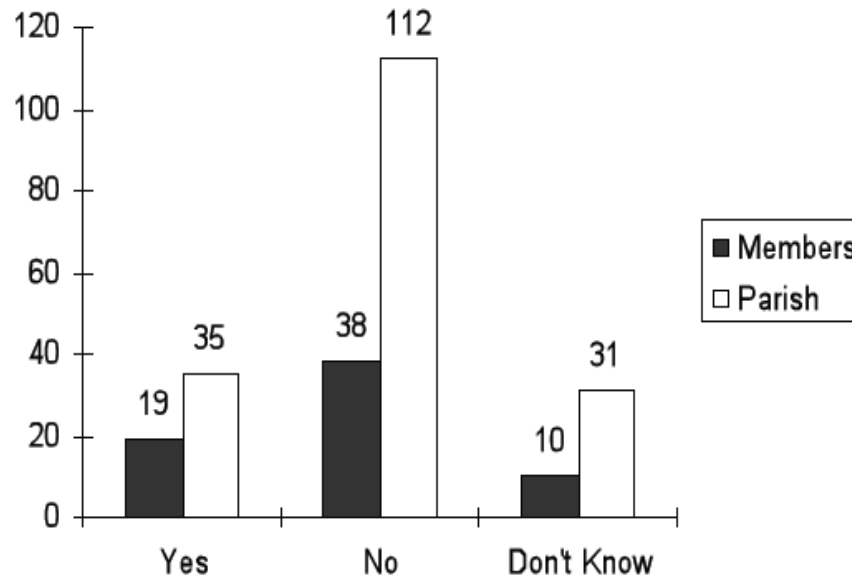




Sandford Heritage Group
<http://www.sandford.org.uk/>

Question 6

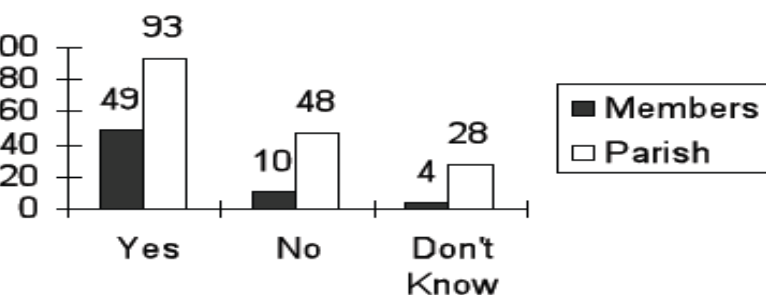
Would you be in favour of a more flexible seating system?



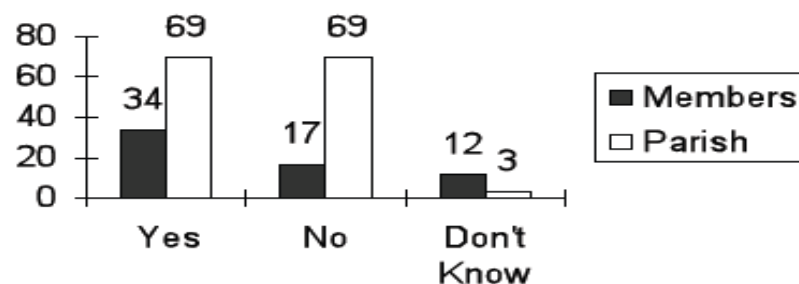
Question 8b

Bearing in mind that the Memorial Hall could accommodate some of the activities listed below would you be in favour of the church being available for Lent courses, seminars, concerts, drama?

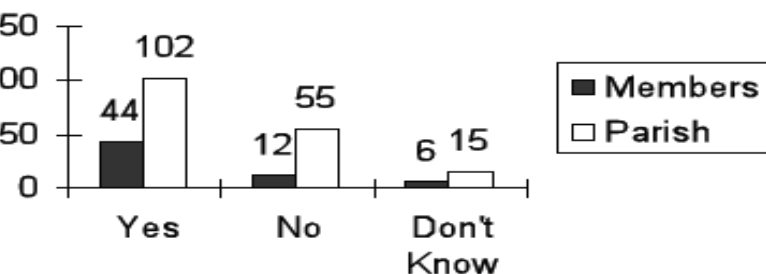
Lent Courses



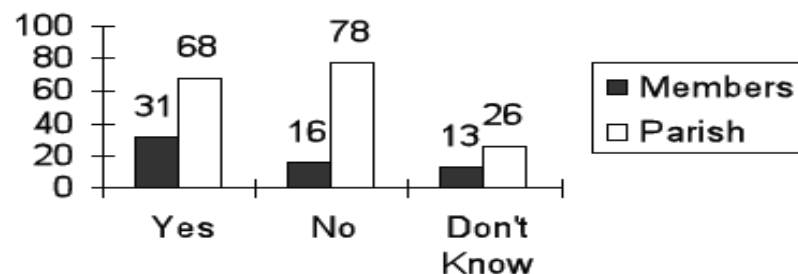
Seminars



Concerts



Drama





←
Before





LOVE IN ACTION!

St Luke's exists to build community in the local area, and to bring spiritual inspiration, emotional support and practical help to those in need

Parents and Toddlers



Welfare advice



The Big Project will make the church a better place to be.
Katie (age 15)



I feel happier when I come here. I feel safer and really relaxed.
Hollie (age 13)

Creative projects



Wednesday Drop-in



It's everything to us. Rita & Trinity



St Luke's has been a lifesaver to me. Harry

Bring & share



It's a church when we play football with children on a Sunday afternoon, knock on a neighbour's door to see if they are OK or when so many people from the community wander in for a cup of tea and a chat. Love in action!
Elise

Community Network lunches



Festivities



Tips



The difference the Big Project will make

The new facilities will improve the quality of what we can offer the community, enabling those who need

a quieter space to use the extra chill-out room for small groups or one-to-one support. It will create more meeting space, and encourage more people to access our different groups.

We have plans to use the new building for better provision for the visual and performing arts which are very popular at St Luke's.

The more spacious kitchen will encourage new skills particularly in young people and will be available to people who may wish to hire rooms for special events. The building will be a source of pride for the area, and offer hope to those who feel marginalised or isolated. Already, the Big Project is having a positive effect on many people's lives as they get involved.

Revd Jane Sherwood, Vicar



Bishop John, Patron of the Big Project

St Luke's is a brave and impressive church serving a community

with high rates of deprivation and punching well above its weight. Its work with children and vulnerable families is particularly effective. I'm proud to support the practical and well-grounded caring activity that St Luke's offers to so many.

The new building will have:

access for everyone, a chill-out room for quieter activities, and a community kitchen. We will keep the foundations and the timber structure, remove the asbestos and rotten woodwork, and fully insulate the building.

chill-out room



architect's drawing of the new building

St Andrew's Church – a brief history

Not parish church is first mentioned in 1286 on the death of Sir John de la Vase whose family had held the manor since the Norman Conquest. The church, the tower and the tower were all constructed in the 14th century and the chancel above the nave in the 15th.

On May 1st 1728 disaster struck. Fire swept through the town destroying many of its wooden buildings and, sparks igniting the thatched chancel roof, the church too. The beautiful Georgian period of St Andrew's arose from the ashes as did the church, thanks to contributions from congregations across the land and wealthy individuals, including Robert Weyman, English first Prime Minister, and the Prince of Wales, the future George IV. Later changes to the church's interior were carried out by the renowned Victorian architect, William Butterfield.

So, for perhaps a thousand years, the church has stood at or near this site. The tower, the chancel and with the town destroyed in 1728, the church was rebuilt. The four principal design features of the church are: the tower, the chancel, the nave and the churchyard. The population is 100 years.



Architect's rendering of the new extension

St Andrew's Church – expanded facilities

St Andrew's Church has been a place of worship for the Parish Administrators.

St Andrew's Church has been a place of worship for the Parish Administrators.

St Andrew's Church has been a place of worship for the Parish Administrators.

St Andrew's Church has been a place of worship for the Parish Administrators.

St Andrew's Church has been a place of worship for the Parish Administrators.

St Andrew's Church has been a place of worship for the Parish Administrators.

St Andrew's Church has been a place of worship for the Parish Administrators.

St Andrew's Church has been a place of worship for the Parish Administrators.



Community Use:

The provision of the new facilities opens up opportunities for far greater access to the community.

With its excellent acoustics, the church will be able to take its place as a fine venue for concerts, public meetings, talks and lectures, exhibitions and festivals. The meeting room will be available for smaller groups.

The garden terrace, accessed from the meeting room, offers a delightful alternative venue for gatherings during the summer months.

Providing for these needs

A building solution to meet these urgent needs has been designed by the church architect Ruth Blackman of Fendall, Swann and Blackman, to the south of the church, extending from the existing vestry/ sacristy through the churchyard boundary wall, making use of land adjacent to the churchyard, purchased from Greenham's School.

Ruth Blackman reflects on some of the main elements of the broad design concept as follows:

"..... the introduction of a curved roof that not only obscures less of the church from the south but also 'floats' above the walls, provides simpler lines, conflicts less with the architecture of the church and adds interest to the view of the church from the south. The traditional brick and flint appearance of the new walls maintains the continuity of the boundary and churchyard walls. The simpler roofline reflects the experience of progression through the building to the largest area that accommodates the multi-purpose meeting room and provides the opportunity to enhance the internal spaces by reflecting the external profile in the ceilings.

It is essential that the new facilities maintain a visual and spiritual link with the church while providing a less formal atmosphere. The visual and physical connection between the extension, the church and the churchyard is reinforced by the use of large areas of glazing into the multi purpose meeting room wall facing the church."

What the new extension will provide:

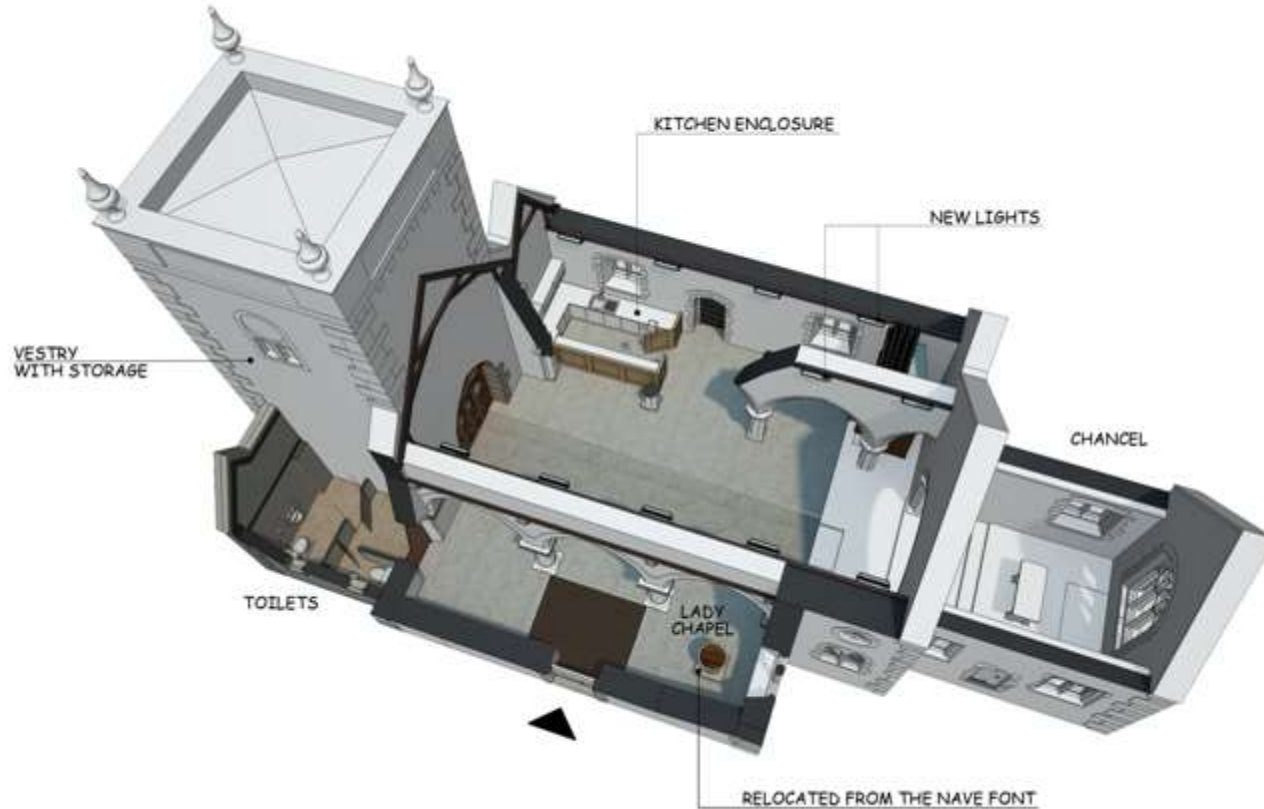
- **Main West Entrance & Lobby** providing an entry and reception point for visitors, a gathering space for clergy and choir prior to processing into church and an area supporting special events in church.
- **Clergy Vestry / Sacristy.**
- **A Parish Office** giving a permanent work base for the Administrator.
- **A Multi-Purpose Meeting Room** to be used as a crèche, for the Sunday School during services, choir rehearsing and practices, meetings and special events. There will also be storage facilities.
- **A Servery** to provide drinks and light refreshments.
- **Utility/Boiler Room** which will include storage for cleaning materials and flower arranging accessories.
- **W.C.s** - two cubicles, one modified for the disabled, and baby changing facilities.
- **Garden / Terrace** - a place of peace and tranquility.



JOIN AN
INSPIRING
CAMPAIGN
PETERBOROUGH 900
CORPORATE OPPORTUNITIES



St John's, Stadhampton













CHURCH OF
ST THOMAS OF CANTERBURY
AND
ELSFIELD VILLAGE ROOM
CAR PARK & WHEELCHAIR ACCESS ➡



