

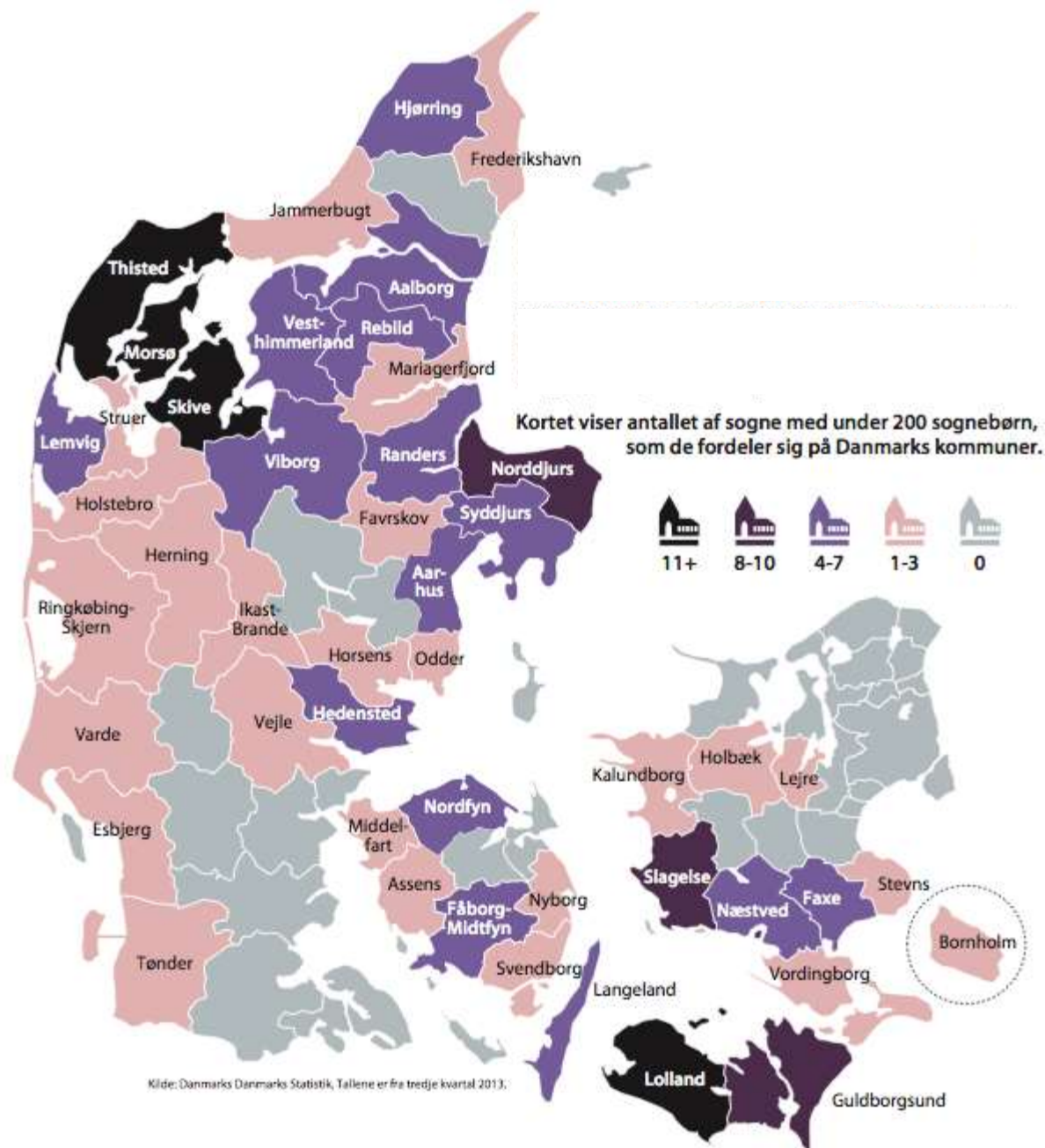
A photograph of a brick wall and a cobblestone path in winter. The wall is made of reddish-brown bricks with light-colored mortar. To the left, a path of dark cobblestones is partially covered with a thin layer of snow. A large, dark, rounded stone sits on the path near the wall. The overall scene is in a winter setting with snow on the ground and path.

The future of Danish rural churches

Ulla Kjær, Danmarks
Nationalmuseum



Denmark has preserved 1683 medieval churches which are almost all of them in use inside the Danish Lutheran Church. They are in general very well-kept. But more than 200 of these churches are serving parishes with under 200 members of the congregation.





VOR HER
RE SOM
ER UNDE
ANGET VI
D HELLIG
ANDEN
ØDT AF
OMFRU
MARIA PI
T UNDER
PONTIUS
PILATUS
KORSE
TET DØL

OG BEGR
AVET NED
FARET TIL
DØDSRI
GET PÅ TE
REDIE DA
G OPSTÅ
NDEN FR
ADE DØD
E OPFAR
ET TIL HIN
AMELS SIT
DØDENDE
VED GUD

ADERS
NAC
TIGEN
DIRE H
D HVOR
RAHIN
KALKO
ME AL
XME L
ENDE O
DØDE
IT TROS
AHEIT
ANDEN

Skive



Buderup Church

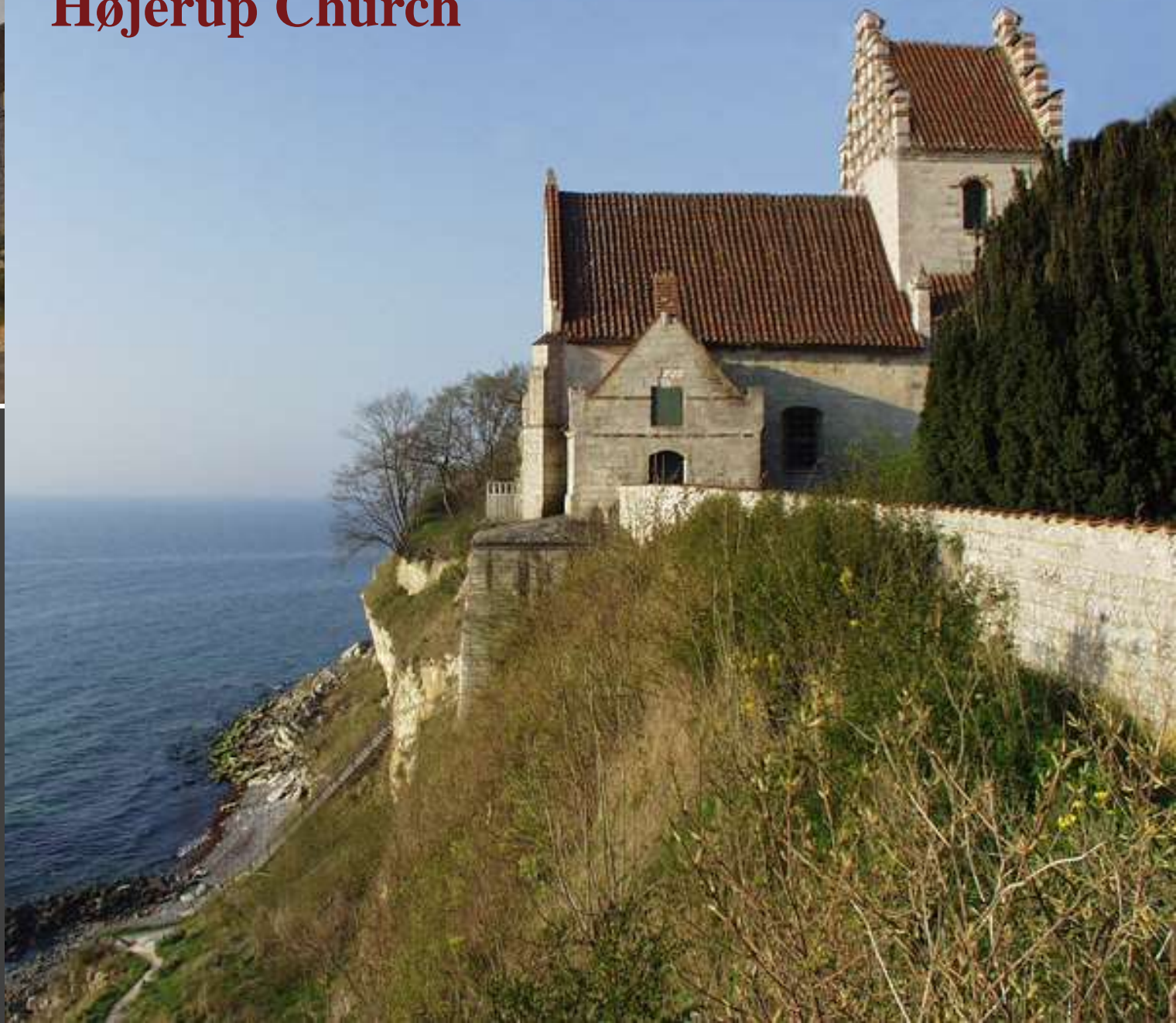
Buderup Church near Aalk





Avnsø Old Church

Højerup Church







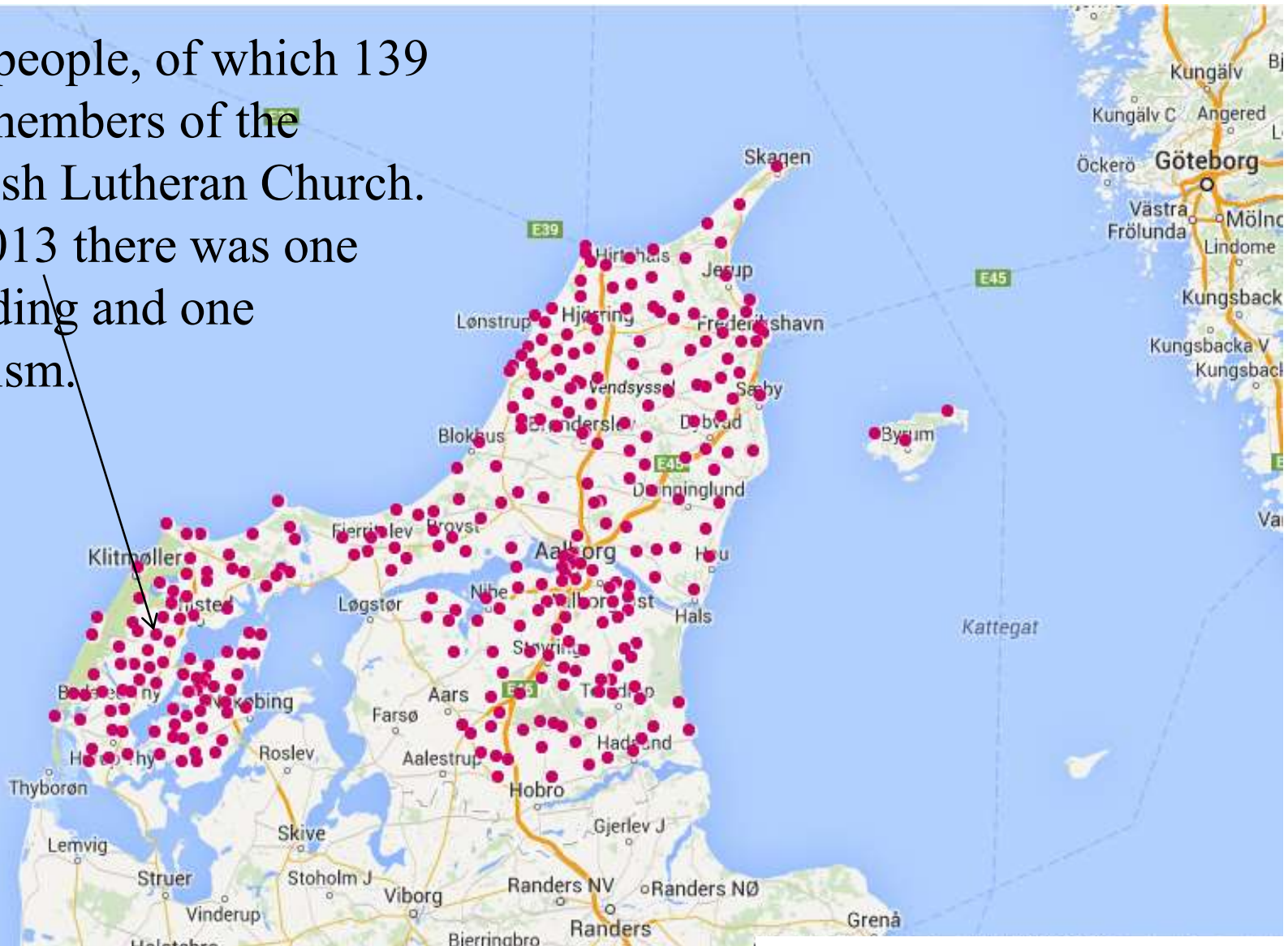




Photomanipulation

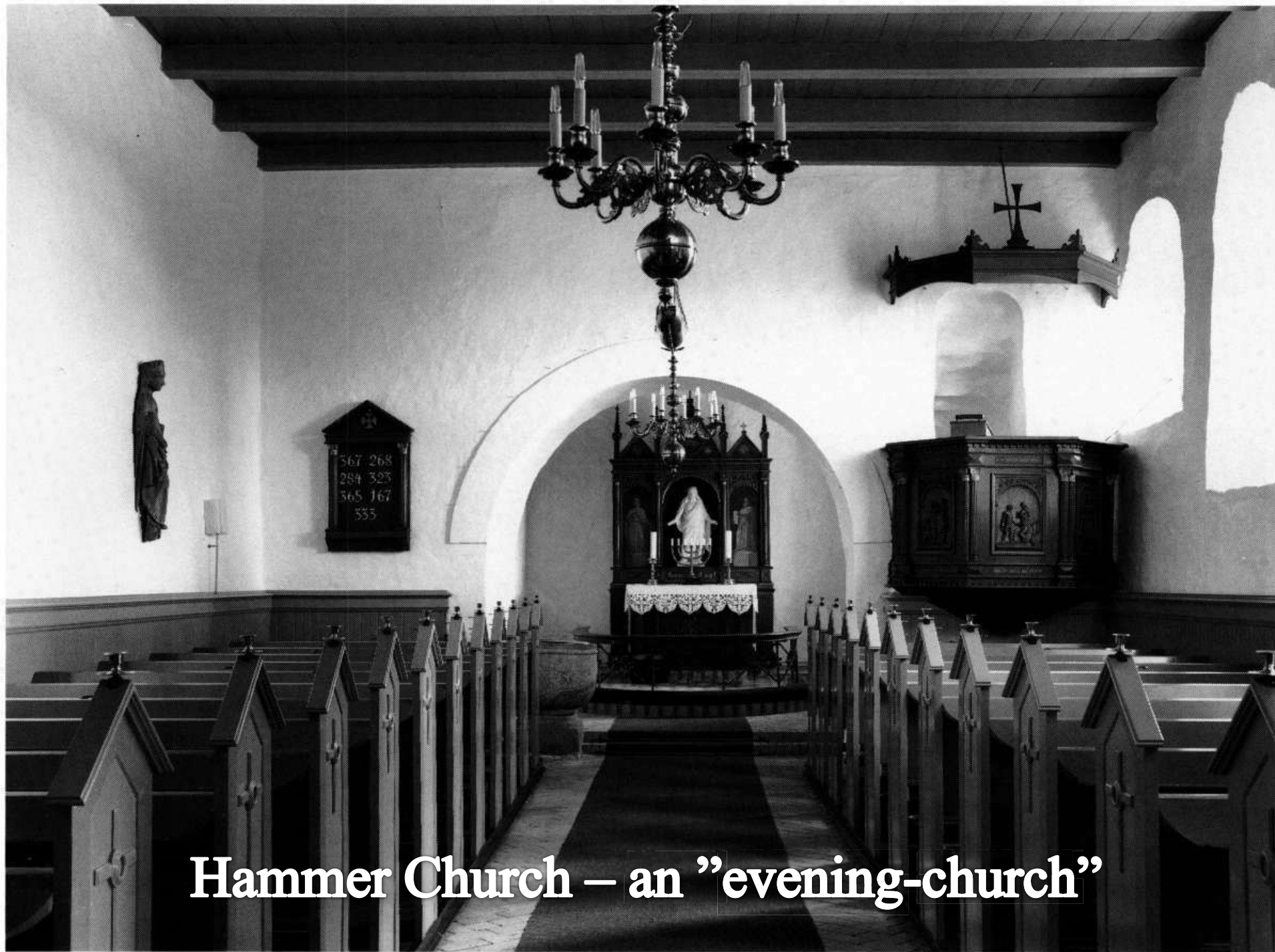
Kallerup Church

155 people, of which 139 are members of the Danish Lutheran Church. In 2013 there was one wedding and one baptism.



(Fra Aalborg stifts hjemmeside)





Hammer Church – an "evening-church"

Since 2005: 5 medieval churches and a number of churches from the 20th. century are made "occasional churches"



Kirke Skensved Church
is serving 270 residents

Jersie Church in the
same parish is serving
6200 residents



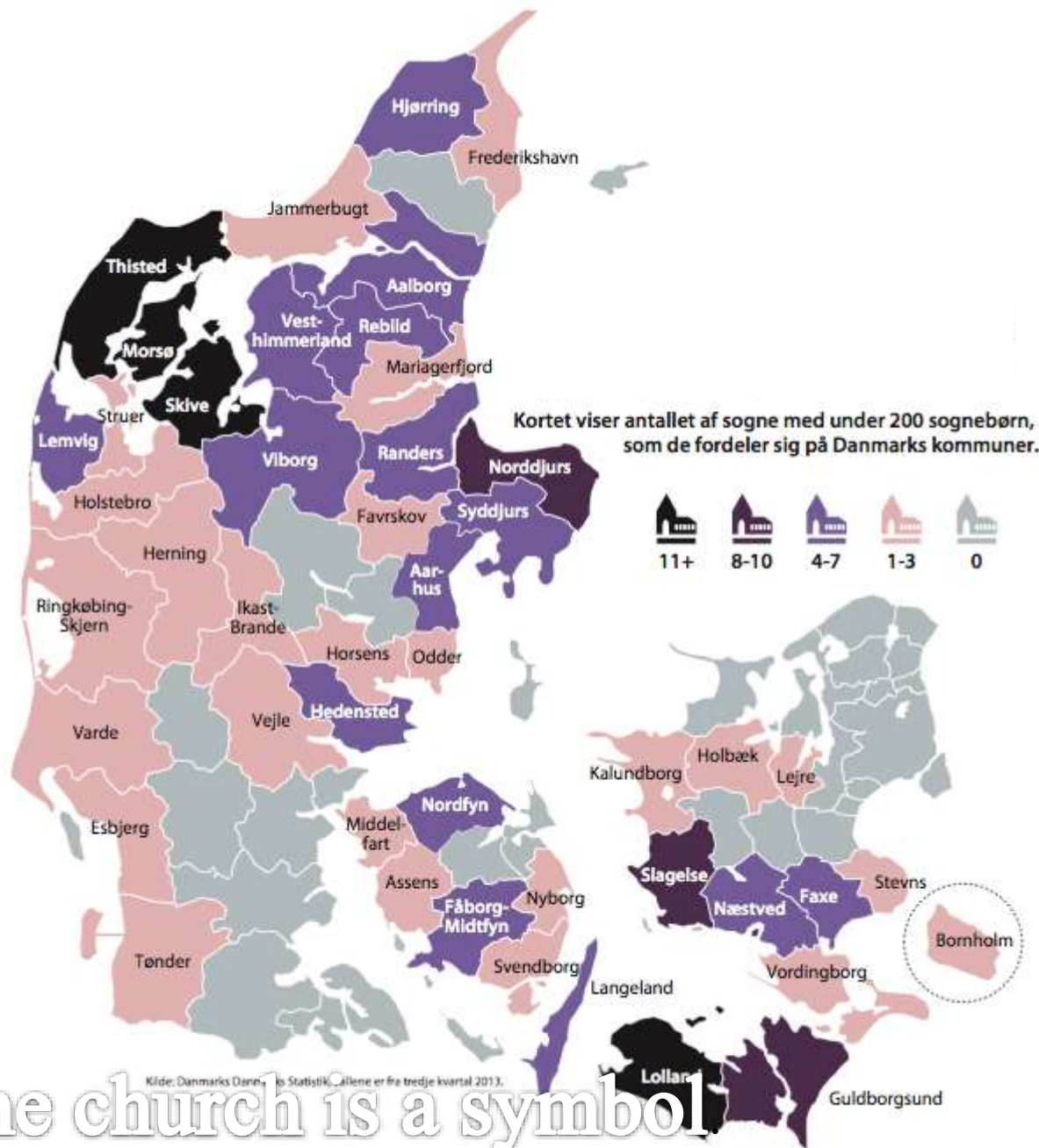
Lydum Church, occasional church 1.1. 2012





Now – in 2014 - major problems with moisture

Altarpainting 1581

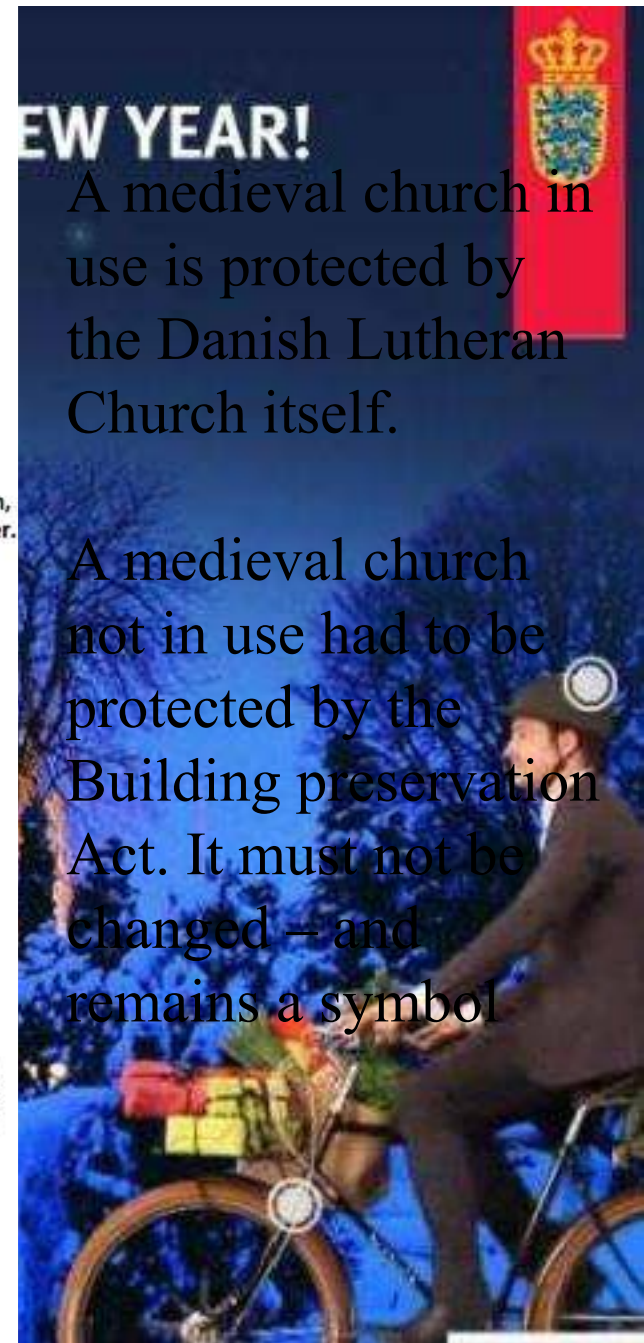


The church is a symbol

NEW YEAR!

A medieval church in use is protected by the Danish Lutheran Church itself.

A medieval church not in use had to be protected by the Building preservation Act. It must not be changed – and remains a symbol





Thank you for your attention